

Step by step

How to create a Status Report

Step 1

Workstation settings

<-

->

CARM Server

Enter text to find

OK

Apply

Workstation settings

General

Personal Desktop

Table editors

Copy

System optimization

Other

HTML/XML export

XML export parameters

E-mail

LDAP

CARM Server

Networksettings

You can specify settings for a connection to the CARM server or the CARM NG server.

CARM Server

Server IP address

CARM NG Server

Server IP address

191.141.1.119

Port

2020

CSS module

☒ Copy specific deadlines for modules

☒ Copy specific responsibility for modules

☐ Show modules beginning with the first approved module

☐ Use the name of the structure/variant as default for the module name

☐ Inherit severity maximum for the effect fringe of the module

CSS catalogs

☒ Use CARM NG Server

☒ CARM Server Administration

CARM NG Server

☒ when uploading actions use only values from the master structure

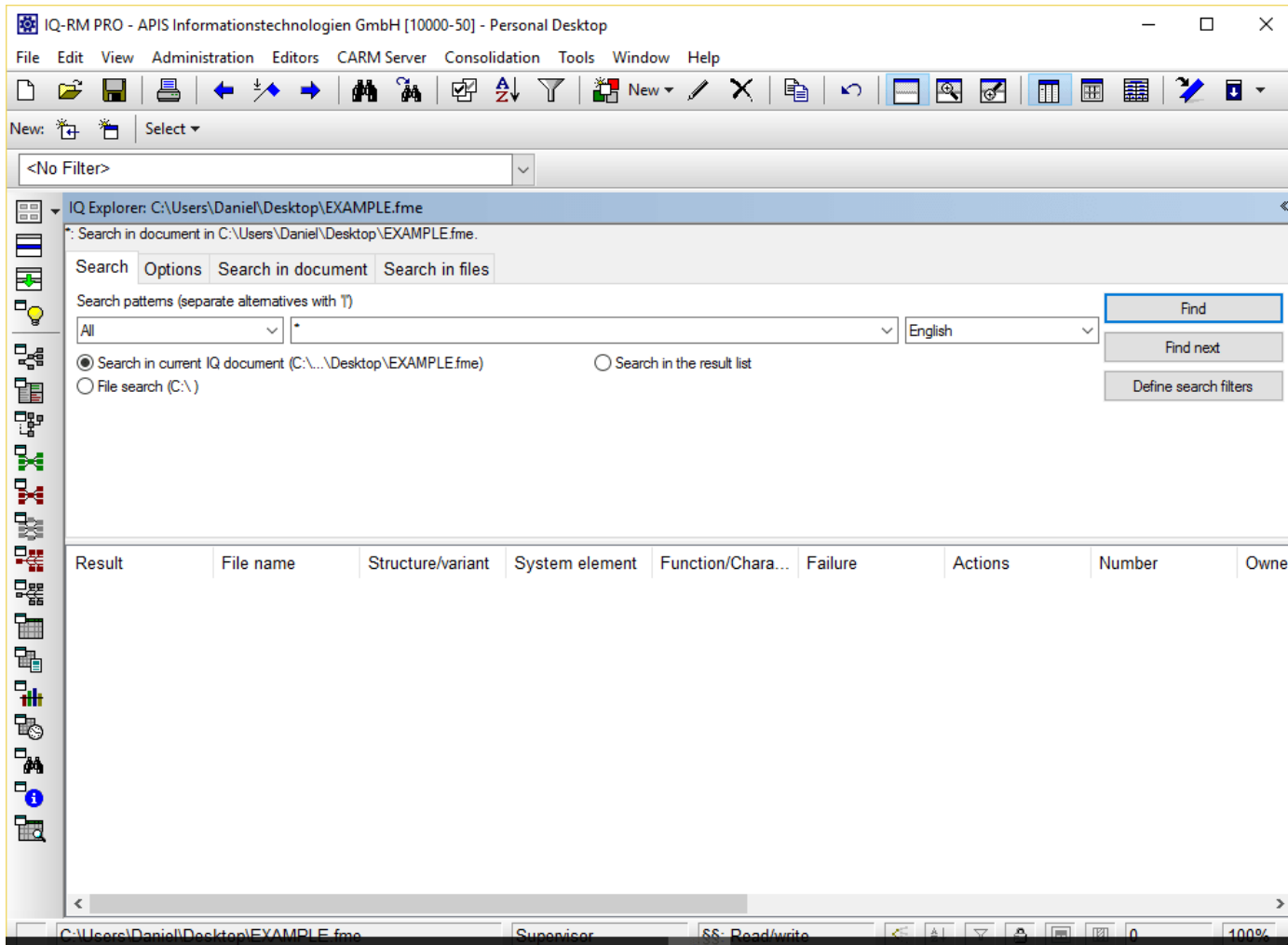
☒ Use the extended notification service when using the action tracking service of the CARM NG Server

Firstly, you will need to check if the CARM NG settings are correct. For this go to “Tools | Workstation settings | Settings | CARM Server”. The IP address and port must be valid to be able to connect.

© APIS Informationstechnologien GmbH

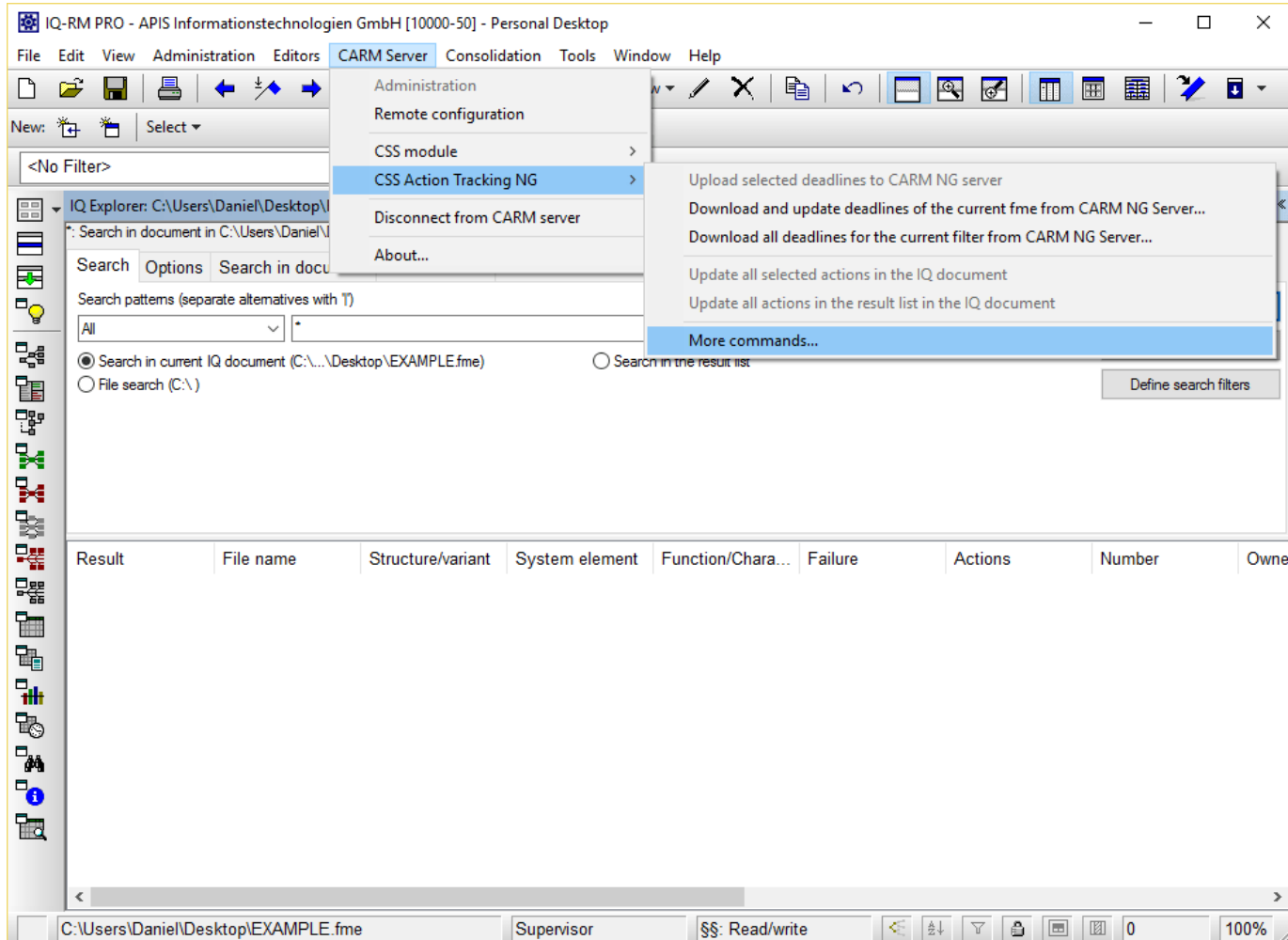
2

Step 2



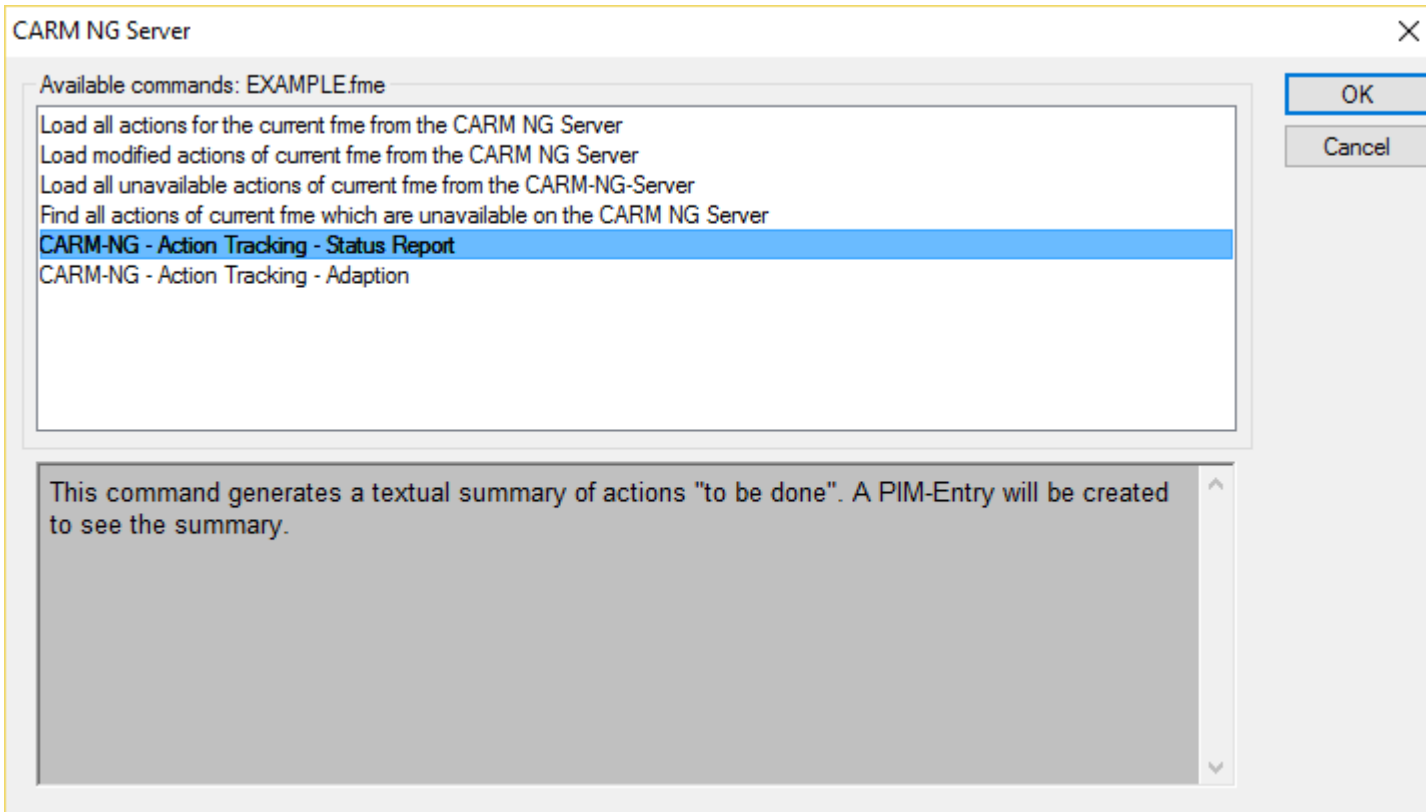
In IQ Explorer, make sure to select "Search in current IQ document"

Step 3



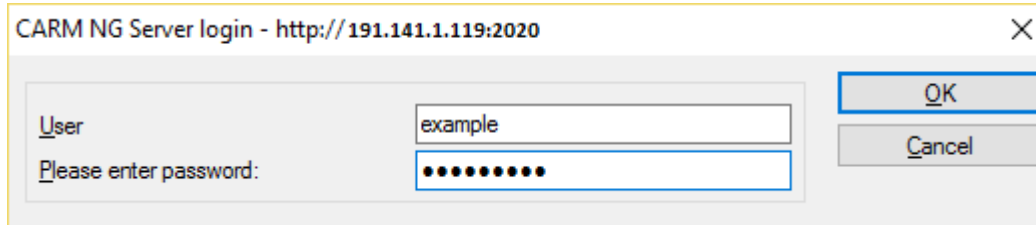
As in the screenshot, select “More commands...” from the menu.

Step 4



Select "Status Report" from the list. A description of what the function does will appear below.

Step 5



CARM NG Server login - http://191.141.1.119:2020

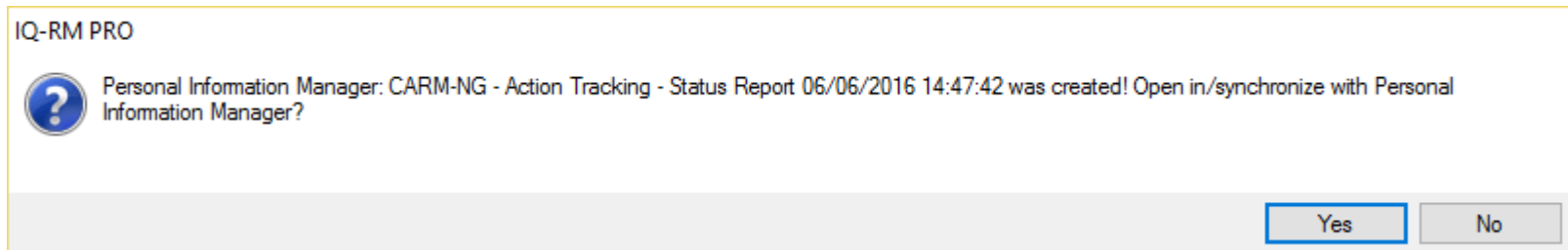
User: example

Please enter password:

OK Cancel

To obtain a connection to the CARM NG Server, a valid username and password is required.

Step 6



IQ-RM PRO

Personal Information Manager: CARM-NG - Action Tracking - Status Report 06/06/2016 14:47:42 was created! Open in/synchronize with Personal Information Manager?

Yes No

This dialog will appear if the correct username and password are entered. Click “Yes”.

Step 7

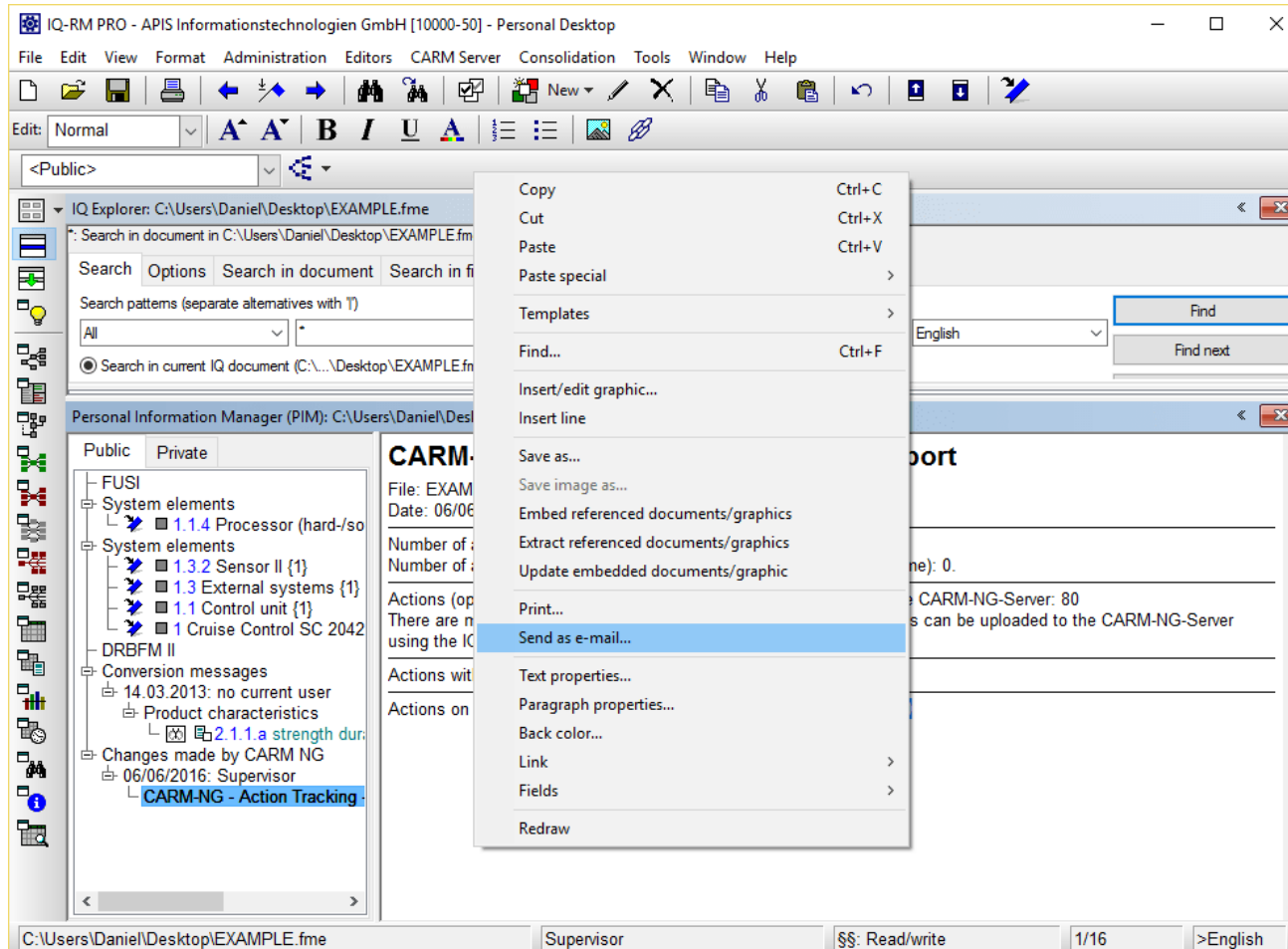
The screenshot displays the IQ-RM PRO software interface. The main window is titled "IQ-RM PRO - APIS Informationstechnologien GmbH [10000-50] - Personal Desktop". The menu bar includes File, Edit, View, Format, Administration, Editors, CARM Server, Consolidation, Tools, Window, and Help. The toolbar contains various icons for file operations and editing. The left sidebar shows a tree view of the project structure, including "FUSI", "System elements", "DRBFM II", "Conversion messages", and "Changes made by CARM NG". The main area displays the "CARM-NG - Action Tracking - Status Report" for the file "EXAMPLE.fme". The report includes the following information:

- File: EXAMPLE.fme
- Date: 06/06/2016 14:49:22
- Number of actions (open and with responsible) in the fme: 80.
- Number of actions on the CARM-NG-Server (concerning the current fme): 0.
- Actions (open and with responsible) in the fme-file not available on the CARM-NG-Server: 80
- There are more than 50 missing actions available. The missing actions can be uploaded to the CARM-NG-Server using the IQ-Explorer.
- Actions with different attributes (fme != CARM-NG): 0
- Actions on the CARM-NG-Server not available in the fme (obsolete): 0

The status bar at the bottom shows the file path "C:\Users\Daniel\Desktop\EXAMPLE.fme", the user "Supervisor", the permissions "SS: Read/write", the page number "1/16", and the language ">English".

You will automatically be directed to the PIM Manager, where you can see the generated Status Report.

Step 8



There it is! If you want, you can send this report in an email to your friends, family & colleagues, for hours of reading pleasure.