

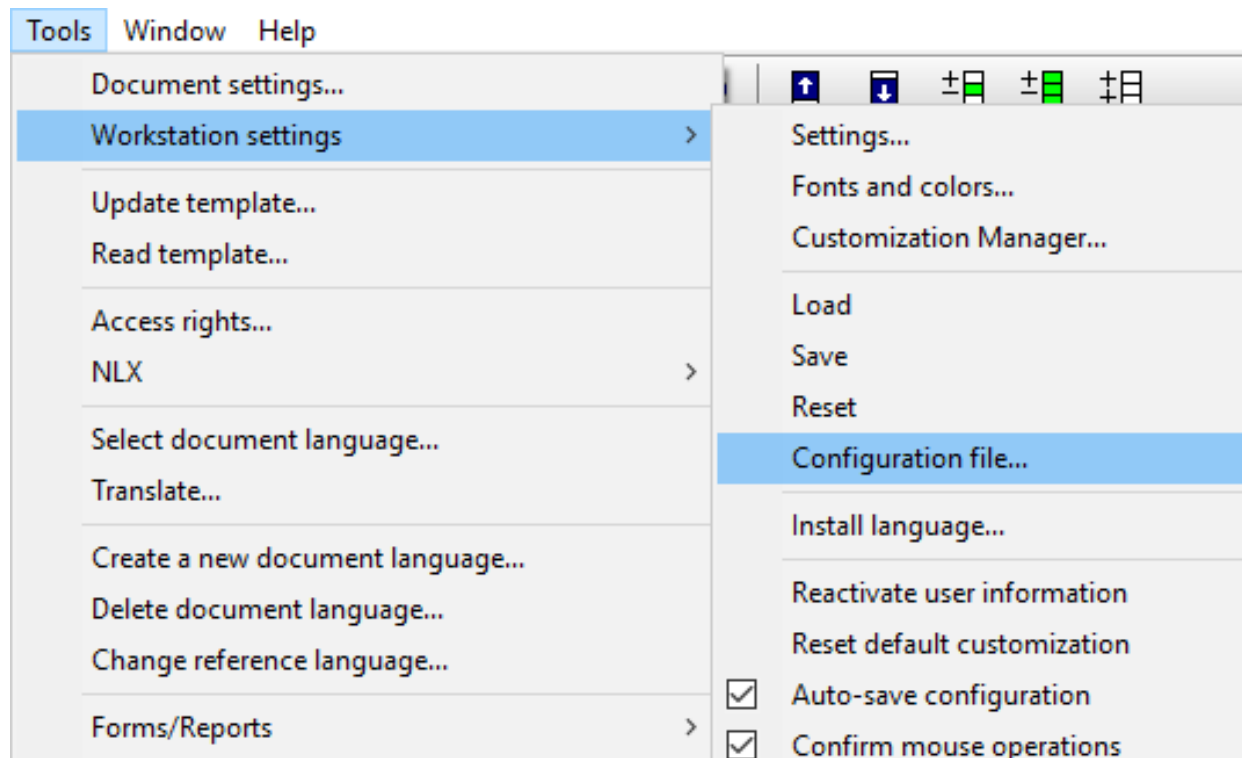
APIS User Meeting 2014

Tips and tricks provided by the APIS Support team



Separate Configuration file for printing

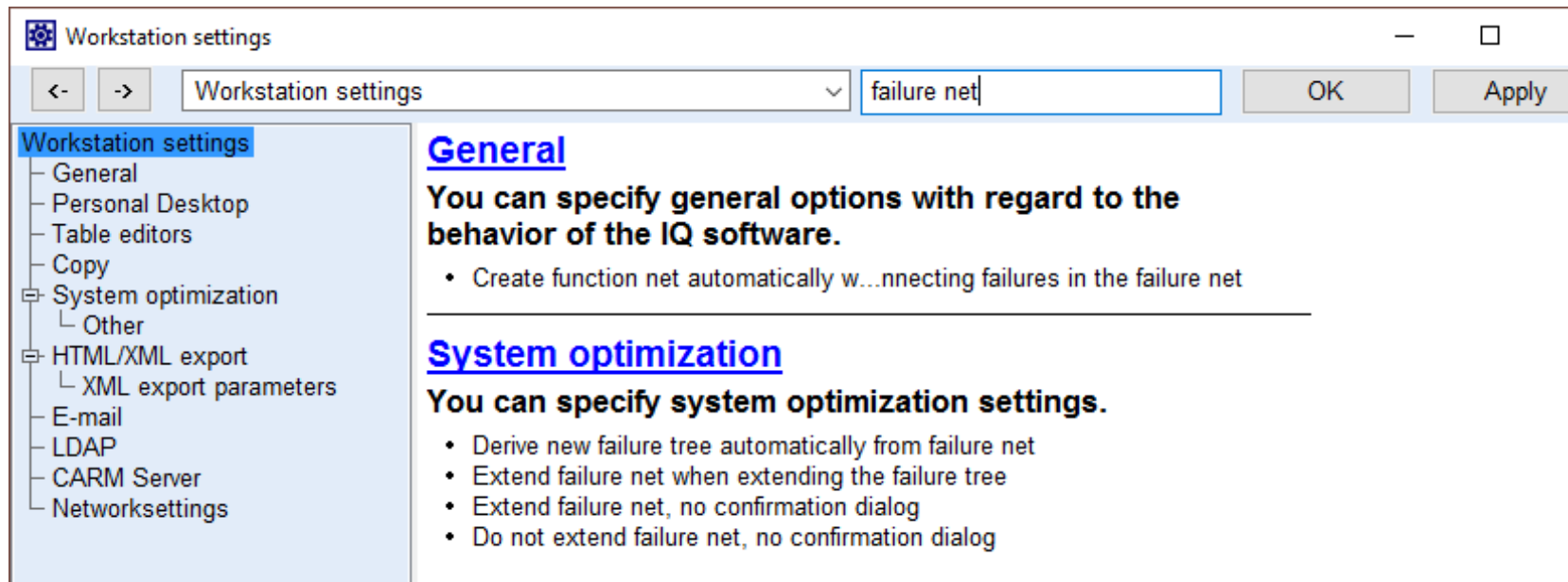
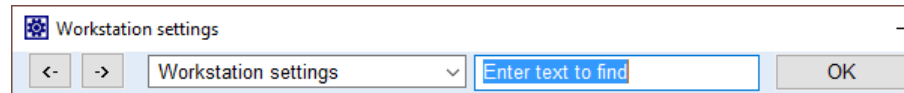
When printing IQ documents, a different layout or display is often needed to that of the IQ Software display. For this reason, a separate config file was created for the IQ user.

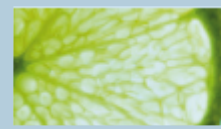




Search box in the IQ dialogs

Many dialogs (e.g. Display options) of the IQ Software are quite extensive. To find the desired setting quicker, the search box can be very useful.





Filter: Auto-filter

Setting an auto-filter in the IQ software is very easy, and we advise you to use them as often as necessary.

The following steps explain how to create an auto-filter:

1. Select the object with the desired properties
2. Use the context menu (right mouse click) and select „Filter“
3. From the drop-down list, select the appropriate criteria.

The auto-filter is now created and the filter will immediately be applied to the screen. This new filter is also listed in the Filter dialog under „Auto-filter“.

By repeating the 3 steps above, you can add new settings to the existing auto-filter, or create new auto-filters.



Filter: Auto-filter example (FMEA Forms)

					resistance Trial	
					D: tests with prototypes Santy, David, ZQS, Qualitätsentwicklung	
ldering connection [olding] mechanical stability of sol- g connection not giv- f solder changes						
nstructive design sol- inadequate solder cho-	4	experience from earlier development projects	tests with prototypes	5	P: change of mesh-densi- ty according to prototype tests Trial D: tests with prototype Santy, David, ZQS, Qualitätsentwicklung	Santy, David, z Qualitätsentwi Trial 15.02.2017 in progress
nstructive design [olding] wrong shielding materi- hosen	3	experience from earlier development projects	material test with plate sample	5	P: examination of differ- ent coatings in the solder- ing area Responsible for compo- nent: signal cable: Kasper, Detlef, RD-S, Sys- tementwicklung P: life-time simulation with focus on vibration resistance	Responsible fo nal cable: Kas S, Systementv Santy, David, z Qualitätsentwi Trial 15.02.2017 in progress

New >

- Action group
- Preventive actions...
- Detection actions...

Properties... Alt+Enter

Delete... Delete

Copy Ctrl+C

Paste Ctrl+V

Show actions from effect...

User-defined attributes...

Occurrence...

Detection...

Responsibility...

Deadline/Status...

Edit notes... Ctrl+B

No revision planned

Info...

Page break

Notify responsible persons...

Notify responsible persons (HTML)...

Upload selected deadlines to CARM NG server

Filter >

Highlight >

Reorder >

-> Failure Net

-> Deadline Editor

Display options...

Bookmark >

Set mark Shift+Ctrl+Up

Back Shift+Ctrl+Left

Revision states by effectiveness

Occurrence (O) >= 4

Detection (D) >= 3

RPN = <unknown>

Responsible = Responsible for component: signal cable: Kasper, Detlef, RD-S, Systementwicklung; Santy, David, ZQS, Qualitätsentwicklung; Trial

Deadline >= 15.02.2017

Status = in progress

Status = open

Action category = <unknown>

Filter...



Filter: Auto-filter as a user-defined filter

Auto-filters can also be used as user-defined filters. Once you have created an auto-filter, go to the Filter dialog and copy it in order to edit it (context menu on the auto-filter → Copy filter to clipboard → context menu → Paste filter from clipboard).

Filter (FMEA form)

Available filters:

- Remove filter/highlighting
- User-defined filters
 - Copy of ???
- System-defined filters
 - > **Auto-filter**
 - Open deadlin
 - Open deadlin
 - Future deadli
 - Deadlines overdue (all res
 - Actions without deadlines
 - Improved actions
 - The top 10 failures (last ra
 - The top 10 failures (initial :
 - The top 10 failures (last cc
 - Changes of structure vers

Filter...

Action group: RPN equals <unknown>

A single filter applies to all kinds of objects. To apply a filter to a selected set of objects types, please use a detail filter.

Details

Which filter criteria shall be scanned?

Criteria... Remove

Which operator shall be used for comparison?

Which condition values (* as wildcard, | as alternative) are to be used?

Values... Remove

Apply

All languages

Default filter for opening fme files

Start Wizard to create new filters...

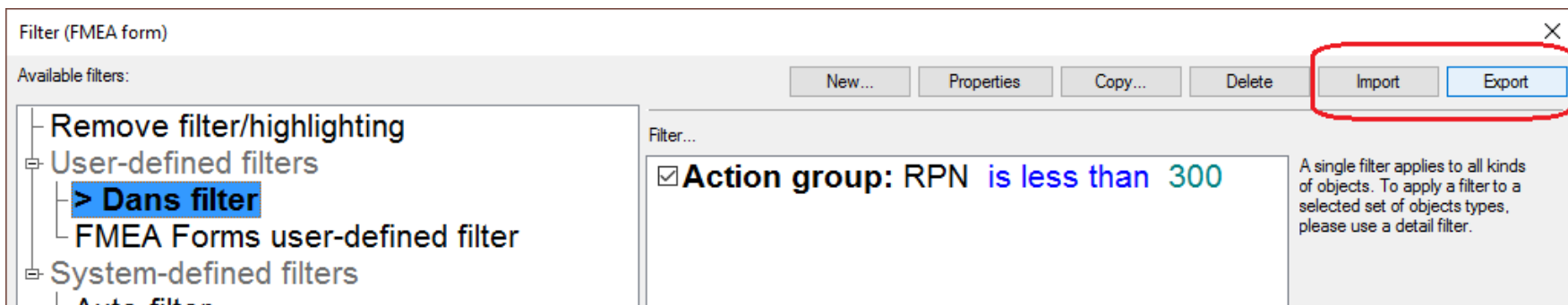
OK Cancel Help



Filter: Export and Import

Almost all user-defined filters are saved to the fme file.

To use these filters in other fme files, simply use the Export functionality in the Filter dialog. Then from the other fme file, use the Import functionality.





Filter: Categories (Action groups)

Filtering for certain categories for action groups is often needed.

From Service Pack 6.5 – 0060 this is possible with auto-filter.

Up to Service Pack 6.5 – 0050 this has to be done with a simple filter

Copy and paste the auto-filter in order to edit it.

Filter (FMEA form) [X]

Available filters: [New...] [Properties] [Copy...] [Delete] [Import] [Export]

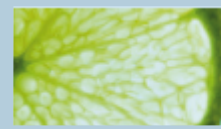
- Remove filter/highlighting
- [-] User-defined filters
 - [>] **Dans filter**
 - FMEA Forms user-defined filter
- [-] System-defined filters
 - Auto-filter

Filter...

- Action group: RPN is less than 300
- Action group: Action category contains R & D

A single filter applies to all kinds of objects. To apply a filter to a selected set of objects types, please use a detail filter.

[Details]



IQ Explorer: Auto-filter when selecting from list

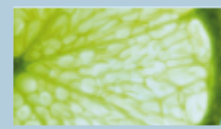
After performing a search, multiple elements can be selected from the result list (hold the Ctrl key while selecting) and an auto-filter created for different editors (e.g. FMEA Forms Editor).

Once you have selected the elements, use the context menu and select „Result list as auto-filter for...“. From Service Pack 6.5 – 0060 it is also possible to perform this on just a part of the result list.

Result	File name	Structure/variant	System
<input type="checkbox"/> soldering connection	C:\Users\d...	Plug - constructive design	sold...
<input type="checkbox"/> Plug {3}		Plug - constructive design	Plug
<input type="checkbox"/> Plug body {1}		Plug - constructive design	Plug
<input type="checkbox"/> Contact pin {1}		Plug - constructive design	Cont
<input type="checkbox"/> Constructive design s		Plug - constructive design	Cons
<input type="checkbox"/> Constructive design c		Plug - constructive design	Cons
<input type="checkbox"/> Constructive design c		Plug - constructive design	Cons
<input checked="" type="checkbox"/> Plug - constructive de		Plug - constructive design	Plug
<input checked="" type="checkbox"/> transmit signal with sp		Plug - constructive design	Cont
<input checked="" type="checkbox"/> soldering material {2}		Plug - constructive design	Cons
<input checked="" type="checkbox"/> soldering area of con		Plug - constructive design	Cons
<input checked="" type="checkbox"/> size of contact area r		Plug - constructive design	Plug
<input checked="" type="checkbox"/> mechanically fixate		Plug - constructive design	Plug
<input checked="" type="checkbox"/> mechanically fixate the contact pins {1}	C:\Users\d...	Plug - constructive design	Plug
<input checked="" type="checkbox"/> material of plug-shielding {1}	C:\Users\d...	Plug - constructive design	Cons
<input checked="" type="checkbox"/> material of plug body {1}	C:\Users\d...	Plug - constructive design	Cons

Context Menu Item	Shortcut
Information table	
Remove search results...	Umschalt+Entf
Properties...	Alt+Eingabe
Delete...	Entf
Add to variant	
Remove from variant	
Convert to	
Results list forward	Strg+Nach-Rechts
Go to object	
Open user-defined view	
Result list as auto-filter for	
Display options...	
Define a search filter...	Umschalt+Einf

Sub-Menu Item
Structure Editor
Function and Failure Analysis
FMEA form
Deadline Editor
Control Plan
Failure Net Editor
Function Net Editor



Printing the Structure list

When working in the Structure Editor, it is often necessary to print the content of the structure list (right half of screen). This is possible by switching to the Function/Failure Analysis Editor.

There are several print options within the Printer settings:

Function and Failure Analysis: Plug - constructive design [Design]

Printer settings

Microsoft XPS Document Writer (Default) OK

Print all Apply

Print all Cancel

Print selection only Help

Print successors too

Portrait Number of copies: 1

Landscape Range

All pages

Current page

Pages from: to:

Pages

Horizontal: Vertical:

Margins in mm

Top: 15

Bottom: 15

Left: 15

Right: 15

Print table with notes

Draft quality

Print optimized for postscript/PDF

Settings... Font... Head/foot... Watermark... Preview...